

Towards new horizons

2023
COLLECTION EN



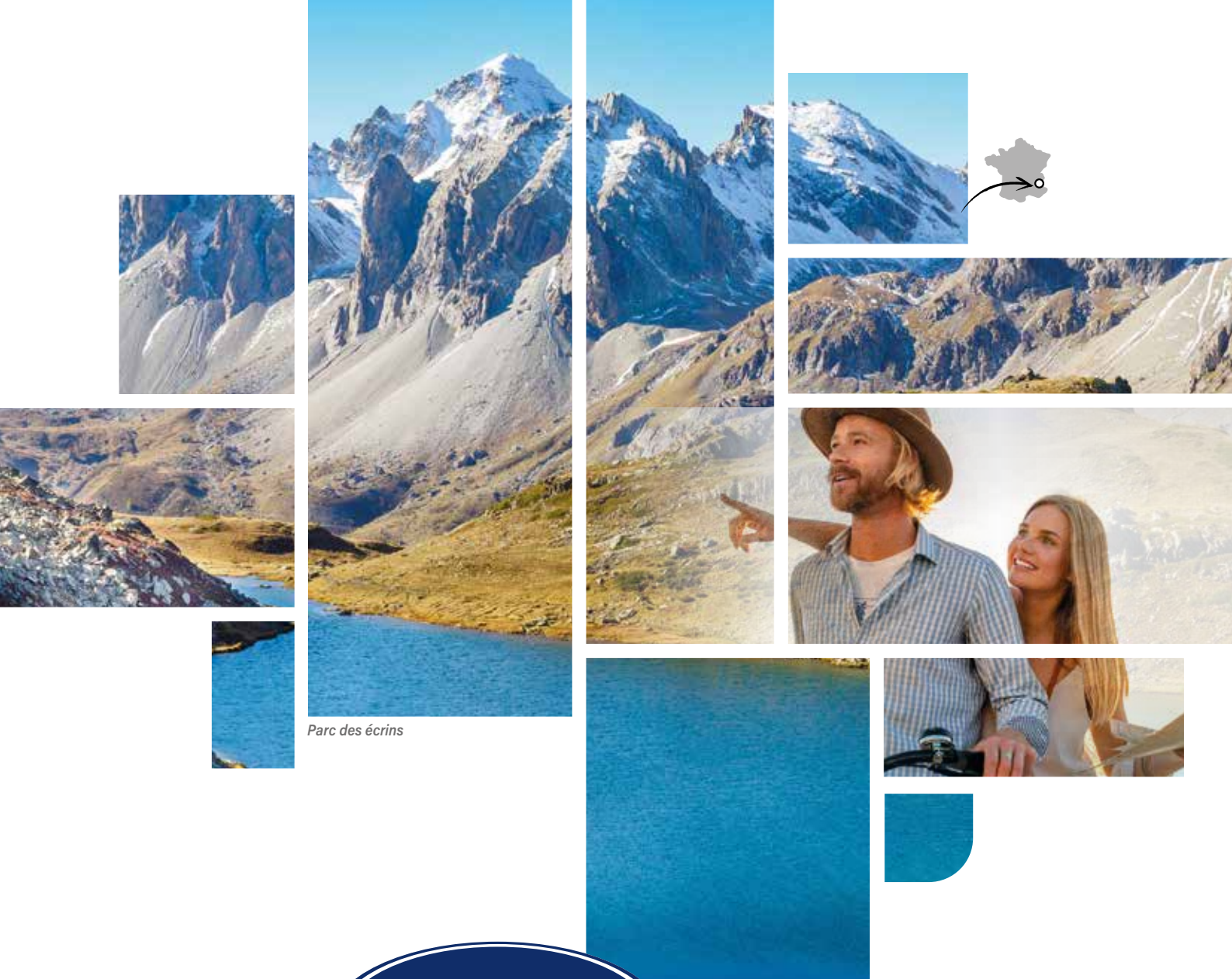
Alba ★★★

Artica ★★★★★

Allegra ★★★★★★

Special series
TITANIUM





More info on

caravelair-caravans.com

In 1962 Sud Aviation, builder of the Caravelle planes based at Trignac in the Loire-Atlantique region, decided to diversify by building motorhomes.

A design office with designers who were extensively experienced in aeronautics launched the first Caravelair motorhomes, which combined creativity and originality. 60 years later, after an uninterrupted series of innovations, Caravelair has become the French market leader in motorhomes and continues developing its expertise by marketing high-quality motorhomes, designed and built for you.

Overview

JUST GETTING STARTED?

*We tell you everything
you need to know*

04

WHY

choose caravelair?

05



Alka^{***}

As light as the price!

08



sleeps 3 to 6



from 1000 kg



Artica^{****}

All-inclusive holidays

12



sleeps 4 to 6



from 1500 kg



Allegra^{*****}

The very best

16



sleeps 4



from 1800 kg



TITANIUM

Special series

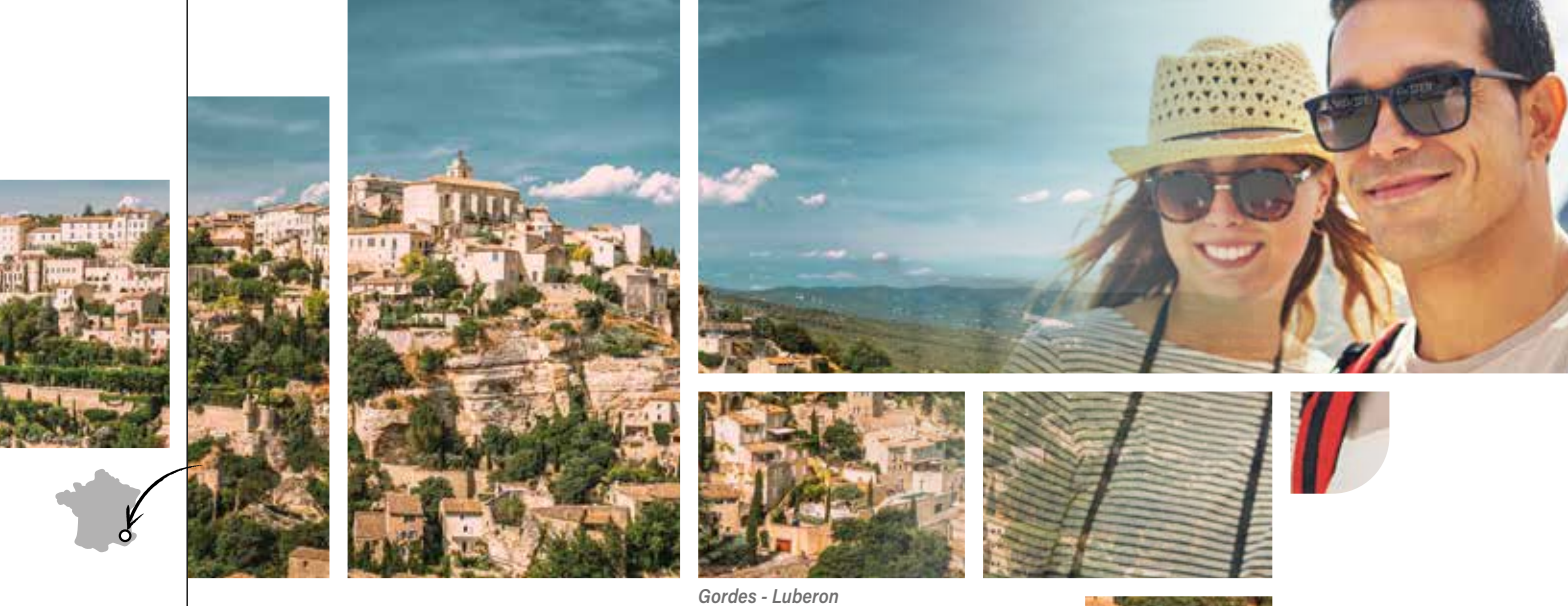
20



sleeps 4



from 1100 kg



Gordes - Luberon

JUST GETTING STARTED?

We tell you everything you need to know

WHAT TYPE OF CAR DO I NEED TO TOW A CARAVAN?

We make every effort to develop and produce lightweight caravans that are easy to tow: this can be seen in the very DNA of CARAVELAIR.

As a result, you don't need an ultra-powerful car to be able to tow one of our caravans – that is one of our strengths!

IS MY CARAVAN ENTIRELY SELF-SUFFICIENT?

Of course. All our caravans can be equipped with a battery or solar panel to make them self-sufficient in all circumstances.

All our caravans are also fitted with a WC and water tanks to complete this self-sufficiency.

CAN I USE MY CARAVAN ALL YEAR ROUND?

All our caravans, FROM THE BASIC MODELS UPWARDS, are manufactured using a process that is unique on the market, called IRP.

The advantages provided by IRP are IMPROVED INSULATION, GREATER RESISTANCE and ENHANCED PROTECTION.

As a result, you can make the most of your caravan all year round.

Of course, depending on the use you make of it during the winter, you need to choose the right heating solution, presented on page 7.

WHAT TYPE OF HEATING FOR MY CARAVAN?

The type of heating will depend on what use you make of your caravan, and we provide a range of different high-performance heating systems:

- **GAS HEATING:** continuous and precise temperature regulation.
- **FORCED AIR:** uniform heat distribution.
- **ULTRAHEAT:** electrical resistance allowing double distribution of hot air and quick temperature increase.
- **UNDERFLOOR HEATING:** aesthetic, ergonomic and silent.
- **TRUMA iNET X:** remote control of heating and air-conditioning equipment (see page 7).

ON THE MOTORWAY OR IN THE MOUNTAINS, WHAT IS THE RISK OF MY CARAVAN SWERVING?

The secrets to good road holding are careful driving and a correctly loaded caravan.

Nevertheless, yaw dampers and/or stabilisers can be added to your caravan if they are not fitted as standard.

Always remember that the load inside the caravan should be properly distributed before you set off.



More info on

caravelair-caravans.com

WHY *choose Caravelair?*

TRAVEL WITH CONFIDENCE



WARRANTY

All our caravans have a 2-year parts and labour warranty.
All caravans have a 7-year waterproof warranty*.

* subject to an annual inspection.



A NETWORK OF PROFESSIONALS ALWAYS READY TO LISTEN

Take advantage of an extensive network of distributors who are genuine specialists in recreational vehicles.



SPARE PARTS

Our European spare parts platform, TRIGANO SERVICE, manages more than 50,000 parts references and delivers throughout Europe.

MADE IN FRANCE WITH FRENCH EXPERTISE



MADE IN FRANCE



Our caravans are designed and manufactured in **TOURNON-SUR-RHÔNE** in Ardèche (France).

One of the largest manufacturing sites in Europe with a surface area equivalent to **33 FOOTBALL PITCHES** and producing more than **5000 CARAVANS** per year.

Our chassis, our cushions, our mattresses, and our furniture all come from specialist factories in France.

TRIGANO VDL

1, av. de Rochebonne - CS 69003
07302 Tournon-sur-Rhône Cedex - FRANCE
France - contact@caravelair.tm.fr





Antibes

TECHNOLOGY THAT IS UNIQUE ON THE MARKET

Our caravans are produced by means of an exclusive process, referred to as IRP.



INSULATION, RESISTANCE & PROTECTION



Enhanced Insulation

XPS STYROFOAM™ insulation, an extra-firm and stable hydrophobic foam offering excellent sound and heat insulation.



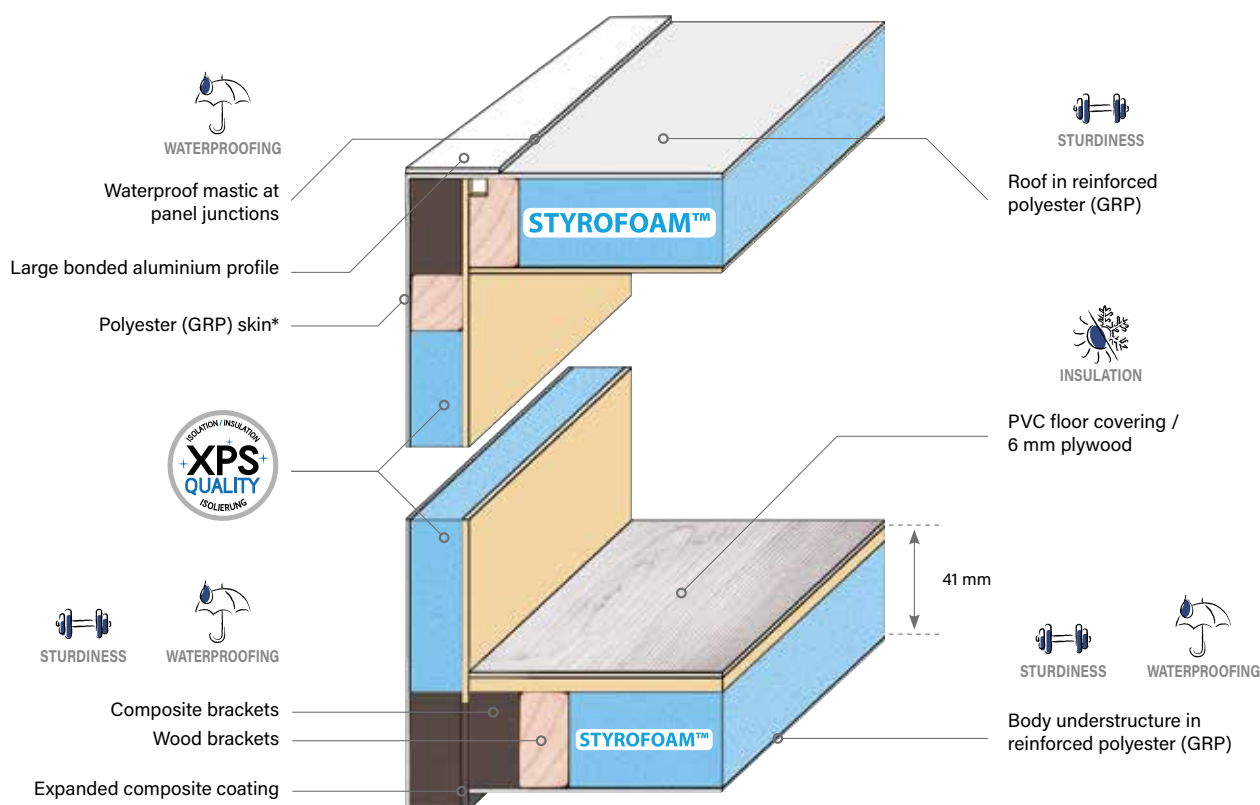
Improved Resistance

An effective combination of wood/composite which strengthens the framework of internal walls and floors, combining the durability of composite with the outstanding resistance of solid wood.



Increased Protection

Protection provided by a polyester* skin, offering enhanced resistance to scratches, small impacts, loose chippings, hydrocarbons, UV light and general bad weather.



*Except ALBA side walls: in hammered sheet aluminium on the standard version.

WHY *choose Caravelair?*

COMFORT FIRST AND FOREMOST



Our comfort mattresses

- 100% Polyester
- thermo-regulated mattress
- 300 g ticking
- Anti-dust mite
- Made in France
- Consists of foam that is not harmful to either our health or the environment.
- Oeko-tex class 1: for a mattress cover with no harmful substances



We offer different mattress thicknesses, depending on our ranges: 12cm, 15cm, 17cm.



XL FREEZE Refrigerator*

At first glance, it's difficult to imagine that this large drawer is, in fact, a refrigerator with a surprising amount of space:

- Very cold fridge offering XL efficiency!
- Enjoy the same performance levels as those offered by domestic models.
- Guaranteed autonomy, even during stops.
- A unique, practical design.
- Perfectly integrated, the XL FREEZE provides 150 L of storage space including 15 L of freezer space and a modular design.



*An efficient heating system**

- **GAS HEATING:** continuous and precise temperature control.
- **FORCED AIR:** even heat distribution.
- **ULTRAHEAT:** dual hot air distribution and quick temperature increase.
- **UNDERFLOOR HEATING:** attractive, ergonomic and silent.
- **TRUMA I-NET X:** to control heating & air conditioning with smartphone.



* In option according to the model.

*As light
as the price!*



Étretat



Discover the
entire range Alba



More info on

caramail-caravans.com



DO I NEED A CARPORT TO PROTECT MY CARAVAN IN WINTER?

No, not necessarily.

*Our caravans are designed
to withstand bad weather.
We nevertheless advise
you to shelter your caravan
when you are not using it
and to air it whenever the
weather allows, regardless
of whether it is sheltered
or not.*

Alba



sleeps 3 to 6



from 1000 kg

With the universally affordable ALBA, take advantage of a low-cost caravan that is easy to tow and boasts all the essential equipment for enjoyable holidays for couples or all the family.



ALBA 426 Family



ALBA STYLE 430*

FOCUS ON



XL Freeze Refrigerator 150L
(Detail page 7)



ALBA STYLE 430*

1. Comfort mattresses / 2. Combined 3-burner stove / 3. LED spotlights for reading / 4. Pre equipment TV

* Model availability according to the country.



Étretat



Alba ★★★

A SELECTION OF 2 FINISHES
(depending on model)

ALBA 426



We like all the equipment
boasting the *Style*
FINISH

- Polyester side walls
- Stabiliser coupling AKS 3004
- Shock-absorbers
- Luggage door (100x40cm)
- Skylight (70x50cm)
- Boiler Truma Therme 5L (230V)
- Waste water tank 30L (Wheeled)
- Fresh water tank 50L (Fixed)
- Shower curtain
- Flexible handshower
- Cushions «Sidney»
- Mattresses 15cm thick
- Bi-color cupboards doors
- Backlit under cupboard storage
- LED lights x4
- Spare-wheel fixation (front trunk)

VALUE OF
THE EQUIPMENT

MORE THAN
4000 €*

ALBA 426

Style



*Price including tax. Details available from your dealership.



ALBA STYLE 426 Family



ALBA STYLE 460*



ALBA STYLE 472*



ALBA STYLE 426 Family



ALBA 486 Family



ALBA 350*

* Model availability according to the country.

All-inclusive holidays



Mont Saint-Michel



Discover the entire range Artica



+ More info on caravelair-caravans.com



CAN I CAMP ANYWHERE WITH MY CARAVAN?

In principle, no: it depends on the country concerned, but in most cases you will be required to use local camp sites. There is nothing to prevent you from stopping for lunch, for example, at the water's edge as long as you comply with local legislation...



Artica ★★★★★



sleeps 4 to 6



from 1500 kg

The ARTICA range offers you a combination of exclusive design, comfort and safety thanks to outstanding standard equipment.

TWIN BEDS OR ISLAND BED (542 or 540)



ARTICA 542



ARTICA 540

SKYVIEW as standard

(Artica 540 et 542)

New
Design
2023



ARTICA 540



ARTICA 540 - Berlin

1. Heavy duty corner steadies x4 / 2. AKS 3004 stabiliser / 3. Comfort matresse / 4. Skylight (90x60cm) /
5. Mosquito-net entrance door / 6. Compressor fridge XL Freeze 150L



Mont Saint-Michel

Artica

★★★★

WITH OR WITHOUT VIP PACK

You can also opt for the equipment in the *VIP* PACK

- Aluminum wheels
- Aluminum spare wheel (Under-floor)
- Exterior Gas socket
- Exterior handshower socket
- Exterior city water socket
- Exterior TV socket on the awning side (12V/230V)
- Luggage door (75x30cm) ⁽¹⁾
- Electric doorstep
- Drawbar cover
- Skylight (90x60cm) ⁽²⁾
- Ventilated skylight (40x40cm) with towel rail
- Kit Comfort (2 Headrests, 2 Lumbar supports, 2 Decorative cushions)
- Smoke detector
- Administrative payload modification
- Heater / Boiler (10L) TRUMA COMBI 6E (230V/GAS) ⁽³⁾

⁽¹⁾ Except for 496 Family and 586 Family

⁽²⁾ Instead of the Skylight (70x50 cm) and not available for 496 Family

⁽³⁾ Instead of the COMBI 4 for 540 / 542 / 586 Family



CLEVER:

BATHROOM WITH SWIVEL PARTITION VARIOBAD

(Artica 540, 542)



ARTICA 540

*Price including tax. Details available from your dealership.



ARTICA 496



ARTICA 542 - Berlin



ARTICA 520



ARTICA 520

FOCUS ON



Aluminum wheels

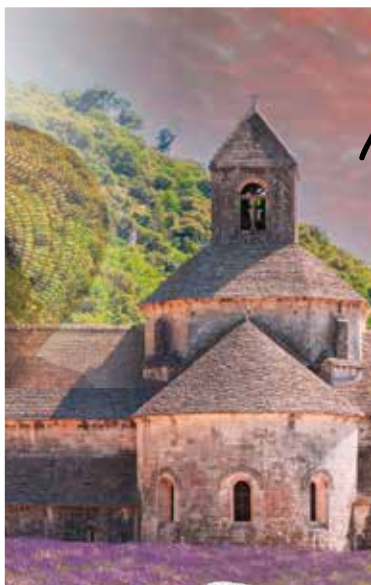


Control panel TRUMA I-NET X

(All the benefits are on page 5 of the technical brochure)



Electric doorstep



The very best



Abbaye de Sénanque



Discover the entire range Allegra



More info on

caravelair-caravans.com



ARE YOUR CARAVANS REALLY PRODUCED IN FRANCE?

We are indeed proud to say that our caravans are entirely designed and assembled in France, in Tournon-sur-Rhône in the Ardèche region.



Allegra



sleeps 4



from 1800 kg

And what if your home were to come on holiday too?

Elegant interior, high level of equipment and outstanding comfort. Our exclusive layouts are designed to ensure you feel right at home!

LIGHT AND BRIGHT as standard



1. Heavy duty corner steadies x4 / **2.** Shock-absorbers / **3.** AKS 3004 stabiliser / **4.** Skyview / **5.** Skylight (90x60cm) / **6.** Comfort matresse 17cm



Antibes



Allegra

★★★★★
PACK *Optima* INCLUDED



CUSTOMERS
BENEFIT

MORE THAN
8000 €*

The equipment in the
Optima PACK
is fitted as standard!

- Aluminum wheels
- Aluminum spare wheel (Under-floor)
- Spare-wheel fixation (Under-floor)
- Exterior city water socket
- Exterior TV socket on the awning side (12V/230V)
- Luggage door (100x40cm) x2
- Ventilated skylight (40x40cm) with towel rail
- Skylight (70x50cm)
- Heater / Boiler (10L) TRUMA COMBI 6E (230V/GAS)
- I-NET X for remote control of Heating & Air-conditioning
- Skylight (90x60cm)
- Drawbar cover
- Electric doorstep
- Integrated oven/grill (GAS)
- Extractor hood
- Smoke detector
- Rounded lounge with headrest
- Folding table on central leg with flexible top
- Lifiable slatted bed base
- Mattresses 17cm thick
- Night lighting on the ground
- Shower column with light
- LED lights under cupboards
- Pre equipment TV: SAT and 230V sockets
- Pre equipment Solar panel
- Technical payload modification (1900kg)



CLEVER:

**FOLDING TABLE ON
CENTRAL LEG WITH
FLEXIBLE TOP**

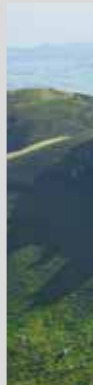
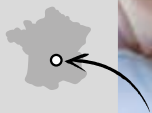


*Price including tax. Details available from your dealership.



Heater/boiler (10L)
TRUMA COMBI 6E (230V/GAZ)





Monts d'Auvergne

Special series



Polyester side walls
Grey



Discover the entire range TITANIUM



+ More info on
caravelair-caravans.com

VALUE OF
THE EQUIPMENT

5000 €*

TITANIUM



sleeps 4



from 1100 kg

FULLY EQUIPPED:

- Polyester side walls
- Aluminum wheels
- Heavy duty corner steadies (x4)
- Drawbar cover
- ABS rear bumper with integrated rear lights
- Roof bar black
- Entrance door with black window
- Blown air (12V)
- Compressor Fridge XL FREEZE 150L (Depending on model)
- Front window (Depending on model)
- Combined blinds & fly nets
- Control panel
- TV Brackett
- Cushions «Austin»
- Bedspread (Depending on model)
- Adjustable head bed part (Depending on model)
- Additional upper cupboard
- Smoke detector
- Pre equipment Leisure battery
- Administrative payload modification (1500 Kg)

* Price including tax. Details available from your dealership.

TITANIUM 450





Monts d'Auvergne

TITANIUM 455



TITANIUM
470



Mont Blanc



Pont du Gard



Cassis



Gironde



by **TRIGANO**

caravelair-caravans.com



Some models photographed in this catalogue may be shown with equipment supplied as an option. The characteristics of photographed models may vary from one country to the next. Despite the care taken in producing this catalogue, this cannot be viewed as a contractual document. CARAVELAIR reserves the right to modify its models without prior notice. CARAVELAIR cannot be held liable for any modifications made by its suppliers nor typographical errors when printing these documents. It is forbidden to reproduce, even partially, text or document. Do not litter the public highway. Your retailer is at your disposal to advise you and provide you with any additional information. Where there are multilingual versions, the French text is the binding version.

All technical characteristics (texts and photos) valid at the time of printing (august 2022) are provided by CARAVELAIR for general guidance. They may be subject to modification, often because of technical progress. Non-contractual document.

TRIGANO VDL

1, av. de Rochebonne - CS 69003 - 07302 Tournon-sur-Rhône Cedex - FRANCE
contact@caravelair.tm.fr

Pictures : Serge Chapuis - Design and layout : jourj.buzz